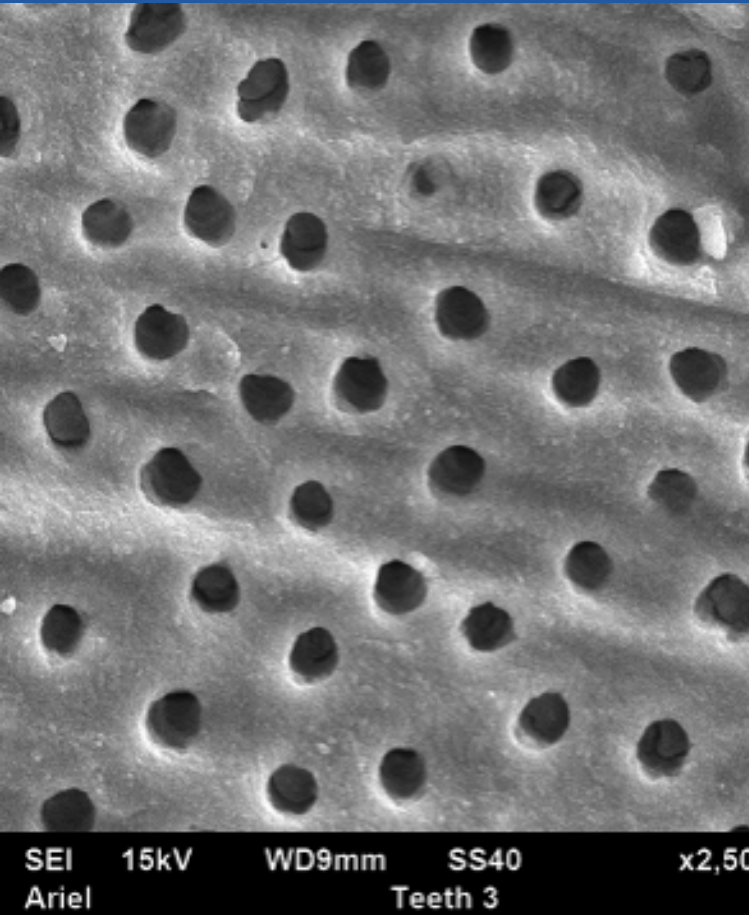


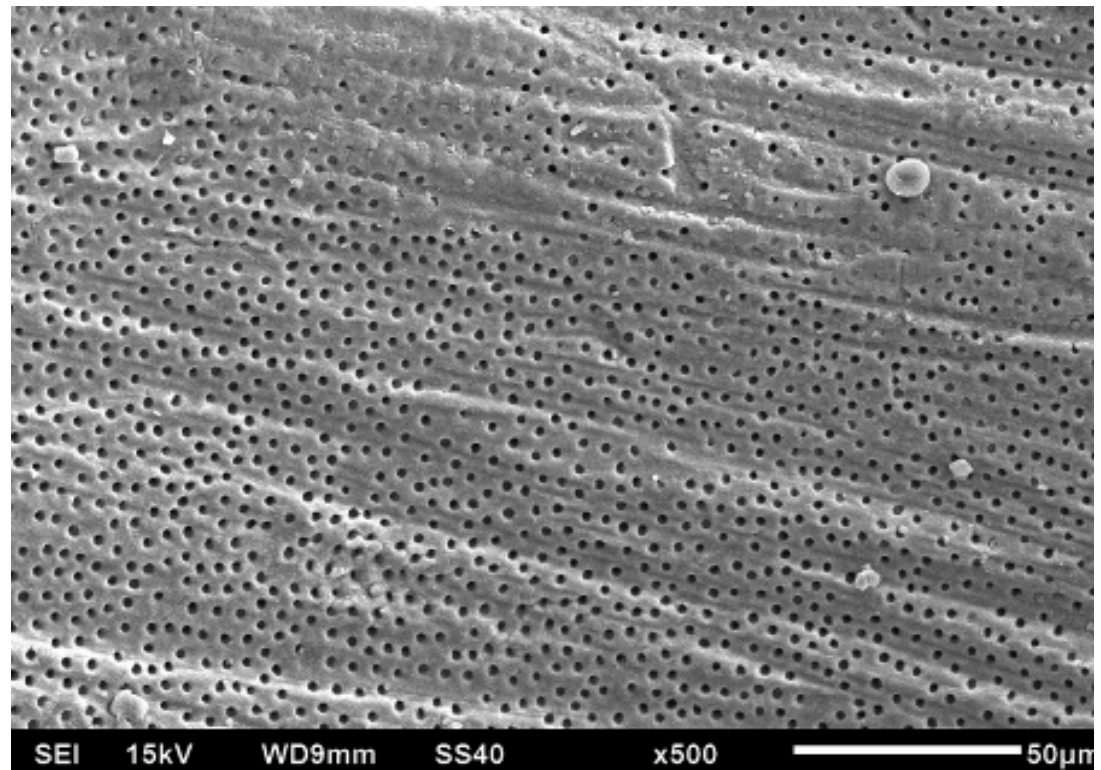


Surface after treatment - The Coronal Third



Enlargement: X 2500

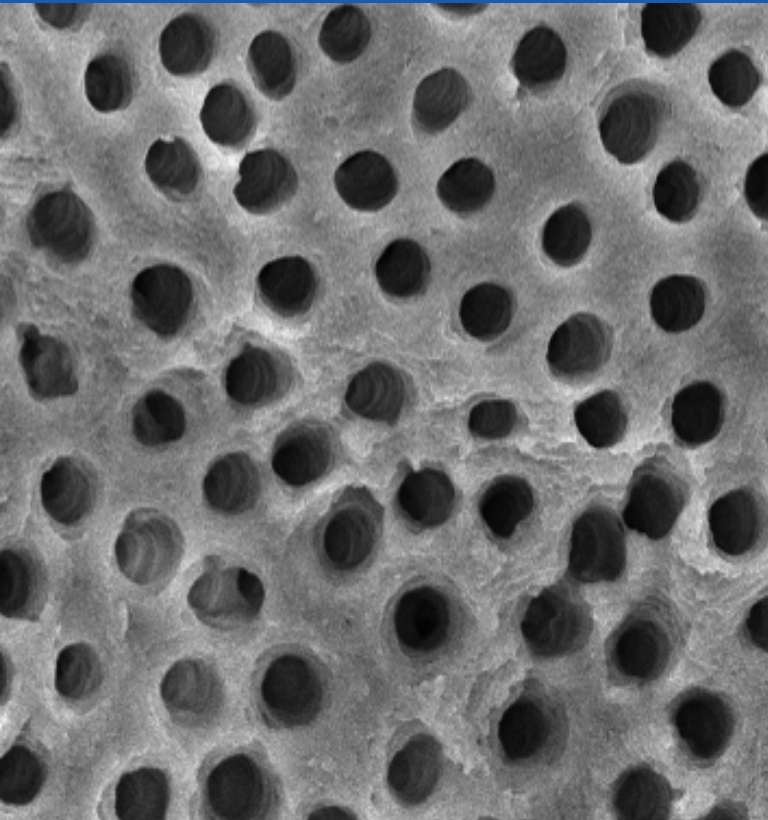
Surface after treatment with the **Gentlefile** and rinsing with anti-bacterial agents



Enlargement: X 500



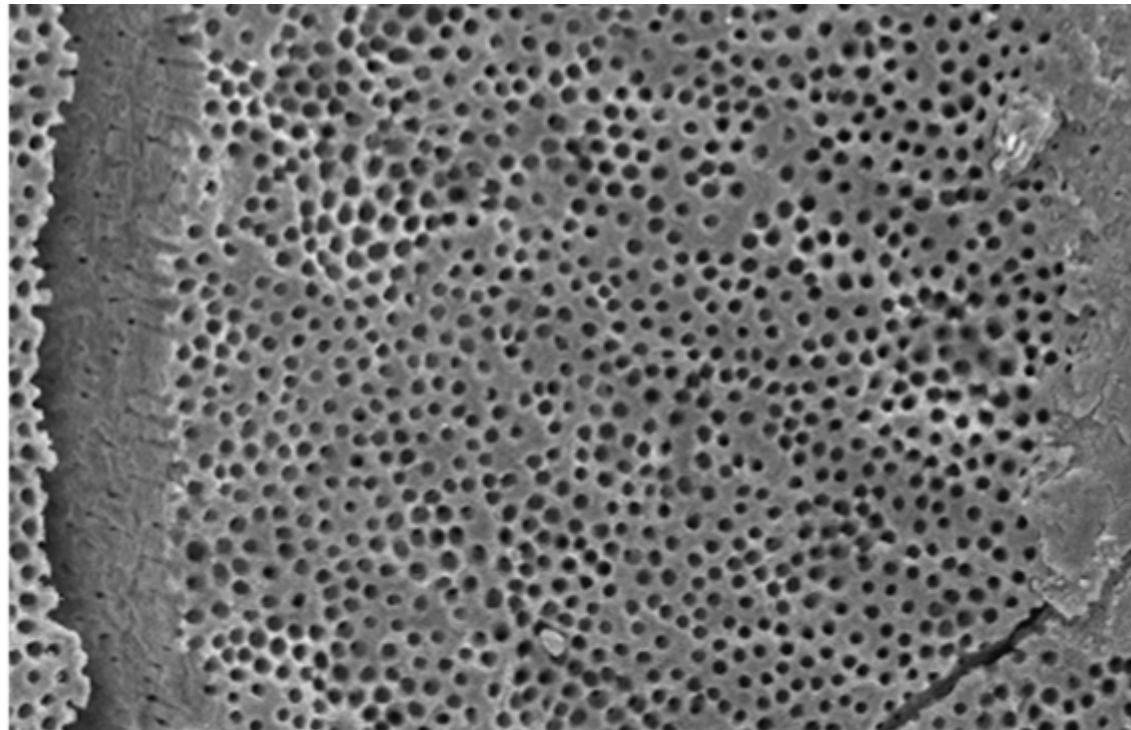
Surface after treatment - The Middle Third



9mm SS40 x2,500 10µm
Teeth 3 0001 21 Jul 2009

Enlargement: X 2500

Surface after treatment with the **Gentlefile** and rinsing with anti-bacterial agents



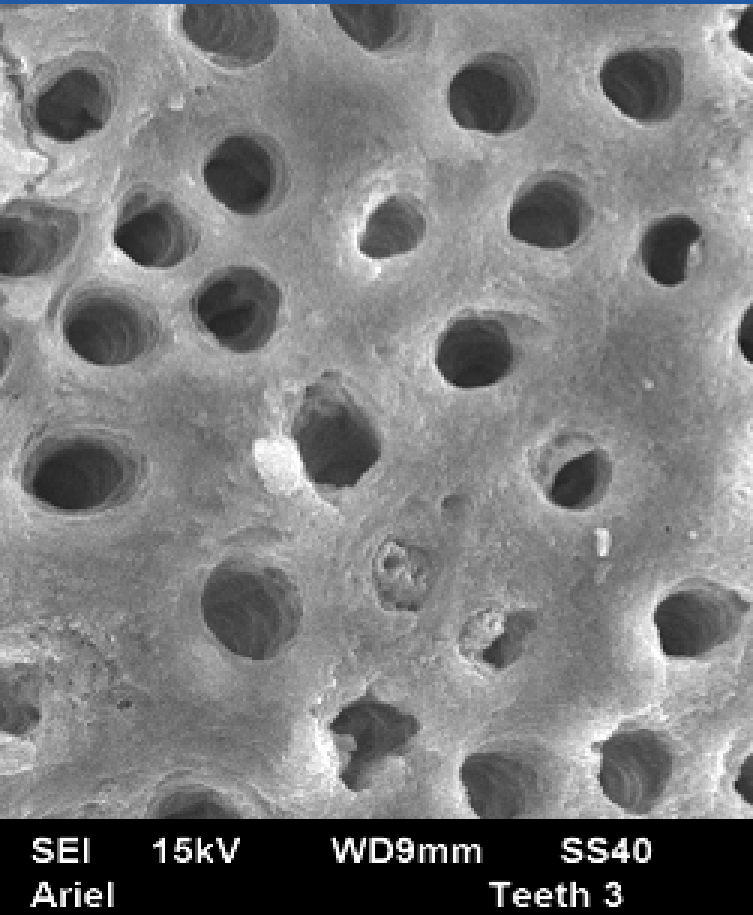
SEI 15kV WD9mm SS40 x500 50µm

Enlargement: X 500

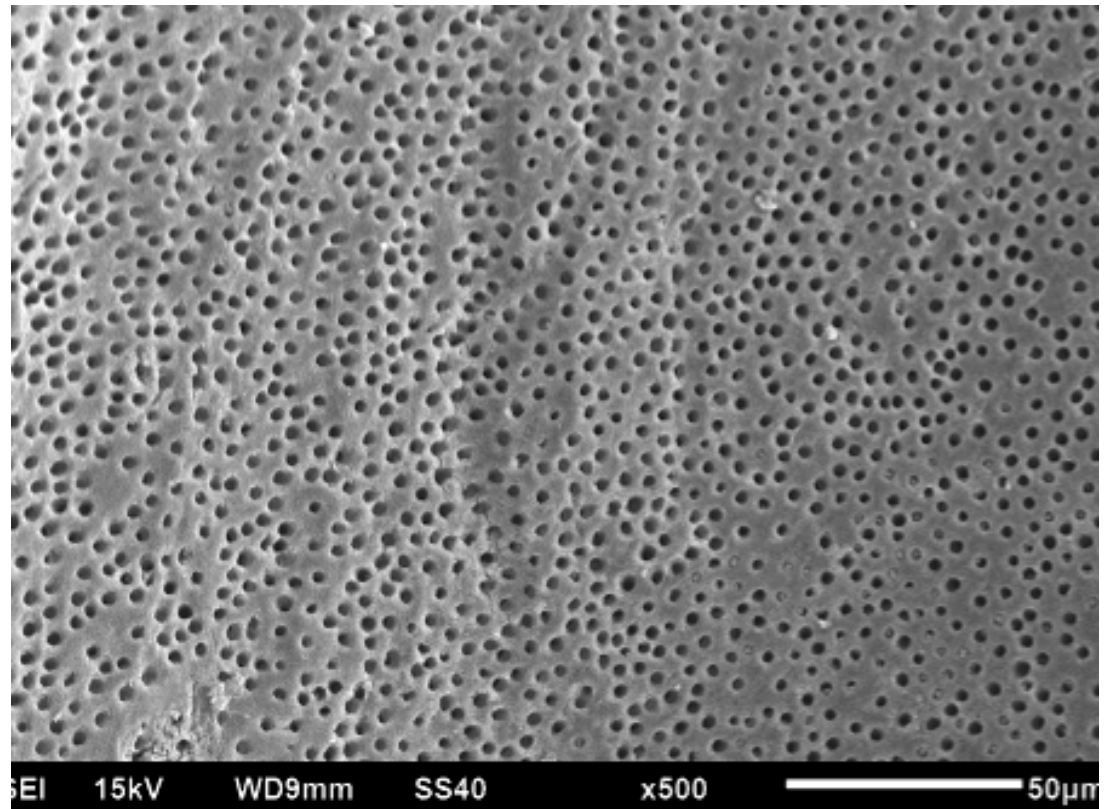


Surface after treatment - The Apical Region

This region is the most difficult to reach and problematic for preparation.



Enlargement: X 2500



Enlargement: X 500



Smile with Gentlefile